

GxShare: Secure external collaboration through GxSuite

Ready. Set. Collaborate.

Collaboration is essential to research, but external sharing introduces complexity, risk and administrative overhead. GxShare extends your existing SharePoint environment to enable secure, structured collaboration with external partners.

As part of GxSuite, GxShare connects people and data while supporting governance, visibility and scalability across collaboration spaces. It also simplifies compliance and oversight through clear audit trails and reporting features, empowering organizations to demonstrate secure collaboration practices to stakeholders and regulators. This approach minimizes manual process bottlenecks and helps teams stay focused on core research objectives.

Designed for real-world research collaboration

GxShare standardizes how organizations invite external users, structure content and secure sharing spaces, helping teams manage collaboration without disrupting internal workflows.

What GxShare includes

- Structured collaboration environments
- Standardized user management
- Secure data access controls
- Branded, tailored collaboration spaces
- Request-based external sharing workflows

Governance without friction

GxShare leverages Microsoft tools such as Forms, Power Automate and Entra ID to track, approve and manage external sharing requests. Automation improves consistency while maintaining clear visibility into access and controls.

TOOLS



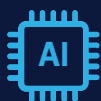
Turn trusted data into AI-ready assets



Prepare data for artificial intelligence success by enforcing governance, integrity and controlled sharing, supporting reliable insights and outcomes.



Reduce AI risk by protecting sensitive and regulated information, limiting access appropriately and preventing AI models from being trained or informed by noncompliant data.



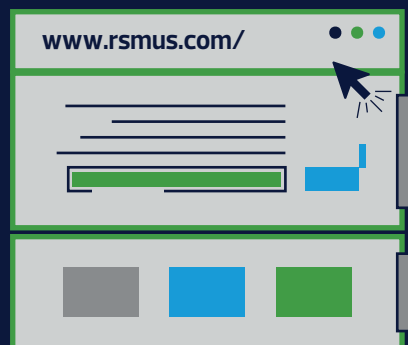
Enable AI-driven insights by creating structured, consistent data environments that support document intelligence, classification and advanced analytics.

Part of the GxSuite ecosystem

GxShare enables secure connection and seamless scalability across collaboration spaces and works in concert with GxNET and LabNET, GxCloud and GxPC, bringing together infrastructure, networking, collaboration and compute into RSM's leading, unified life sciences platform, GxSuite. The suite supports faster time to market for new therapies, reduces operational costs through centralized management, and enables new revenue opportunities through innovation and efficient scaling across the enterprise.

Why RSM?

RSM combines deep life sciences industry knowledge with technical experience to help organizations design and operate secure, scalable digital environments. Our teams understand regulated data, complex research workflows and the realities of scientific collaboration, bringing a practical, governance-focused approach that aligns technology to your business and research goals.



+1 800 274 3978
rsmus.com

This document contains general information, may be based on authorities that are subject to change, and is not a substitute for professional advice or services. This document does not constitute assurance, tax, consulting, business, financial investment, legal or other professional advice, and you should consult a qualified professional advisor before taking any action based on the information herein. RSM US LLP, its affiliates and related entities are not responsible for any loss resulting from or relating to reliance on this document by any person. Internal Revenue Service rules require us to inform you that this communication may be deemed a solicitation to provide tax services. This communication is being sent to individuals who have subscribed to receive it or who we believe would have an interest in the topics discussed.

RSM US LLP is a limited liability partnership and the U.S. member firm of RSM International, a global network of independent assurance, tax and consulting firms. The member firms of RSM International collaborate to provide services to global clients, but are separate and distinct legal entities that cannot obligate each other. Each member firm is responsible only for its own acts and omissions, and not those of any other party. Visit rsmus.com/aboutus for more information regarding RSM US LLP and RSM International.

RSM, the RSM logo and "the power of being understood" are registered trademarks of RSM International Association.

©2026 RSM US LLP. All Rights Reserved